



Quality Testing at its Best!

Analysis is an integral part of quality control in the Tobacco market. The Astoria® and Astoria® 2 micro flow systems from Astoria-Pacific offer the specifics for the required testing through the use of our continuous flow technology. This testing not only targets individual leaves but also every aspect of production from the field to the consumer. Both the Astoria and Astoria 2 have multichannel testing capability for simultaneous analyses of tests, offering the convenience of one to four tests to be run from one sample. This reduces the need to change test manifolds, avoids repeated reloading of the same samples on the system and saves time by completing the required analyses on a single sample with one pass through the instrument. Many tests like nicotine, ammonia, chloride and total reducing

sugars can be automated and analyzed at up to 120 samples per hour (depending on test configuration), while giving the technician the ability to do other tasks within the lab. By increasing sample throughput, sample turnaround time is decreased and laboratory production is increased. Using Astoria Analyzers, labs not only save money reducing reagent consumption and waste disposal, but also use personnel more effectively. With rapid sample throughput many samples can be analyzed per shift, allowing several representative samples to be measured instead of just one measurement to characterize a large individual lot of tobacco. This yields a closer and statistically more accurate evaluation achieving better quality control.

Test	Range	Chemistry
Reducing Sugars	2-30% by wt	PAHBAH
Total Red Sugars	2-30% by wt	PAHBAH
Nicotine	0.5-5% by wt	Chloramine-T
Nitrate	3-50 mg/L	Hydrazine
Ammonia	2-40 mg/L	Salicylate
Chloride	6-300 mg/L	Mercuric Thiocyanate
HCN (Smoke)	0.5-14 mg/L	Pyridine / Chloramine-T
HCN (Smoke)	0.5-14 mg/L	Nicotinic Acid / Chloramine-T

Required Bench-top (Operational) Space

2 channel unit: 11.25 inches W x 17.25 inches D x 10 inches H (28.6 cm W x 43.8 cm D x 25.4 cm H)

3 - 6 channel unit: 22.5 inches W x 17.25 inches D x 10 inches H (57.2 cm W x 43.8 cm D x 25.4 cm H)

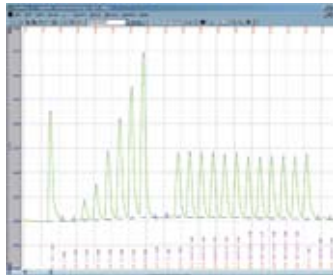
Key Features of FASPac II

- Timed events: pump, heat bath, lamp control
- Real time Sample Table correction
- Peak markers/ID's on real time signal plot
- Calibration Wizard for online standards prep*
- Bi-directional LIMS communication
- Export/Import of reports and Sample Tables
- Pseudo channels for analytical corrections/calculations
- Ability to add samples during a run

*NOTE: Diluter module required

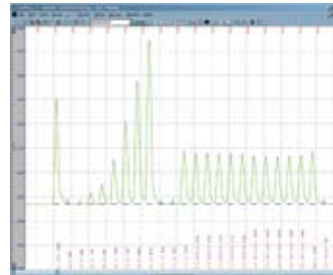


Nicotine



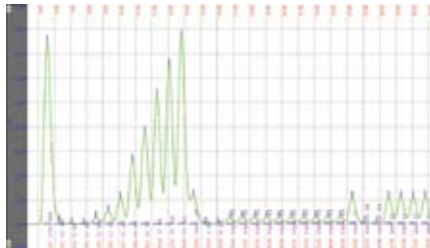
Range: 5-50 mg/L
SD: 0.17mg/L (**18 mg/L**)
RSD: 0.97%
MDL: 0.65 mg/L
Analysis rate: 72 samples/hour

Reducing Sugars



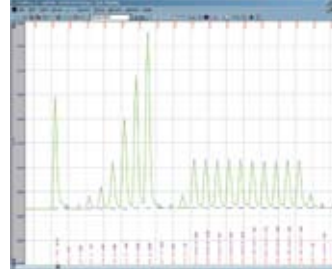
Range: 20-400 mg/L
SD: 0.63 mg/L (**107.9 mg/L**)
RSD: 0.58%
MDL: 2.36 mg/L
Analysis rate: 72 samples/hour

Cyanide, HCN



Range: 0.5 - 14 mg/L
SD: 0.06 mg/L (**9.9 mg/L**)
RSD: 0.61%
MDL: 0.02 mg/L
Analysis rate: 80 samples/hour

Total Reducing Sugars



Range: 20-400 mg/L
SD: 0.59 mg/L (**98.1 mg/L**)
RSD: 0.60%
MDL: 2.23 mg/L
Analysis rate: 72 samples/hour

We hope you understand our commitment to excellence. By choosing Astoria-Pacific International, you not only gain a compact, robust, reliable analyzer but also gain the best Customer and Technical Support teams in the industry. Whether it is showing you how to run the system for the first time, giving you pointers on

the best ways to maintain system performance, making sure you have the supplies necessary for uninterrupted operation, or helping you push your detection limits, Astoria-Pacific is dedicated to making sure that your needs are met. Essentially, by choosing Astoria-Pacific, you are choosing the Best!

Astoria-Pacific[™]
INTERNATIONAL